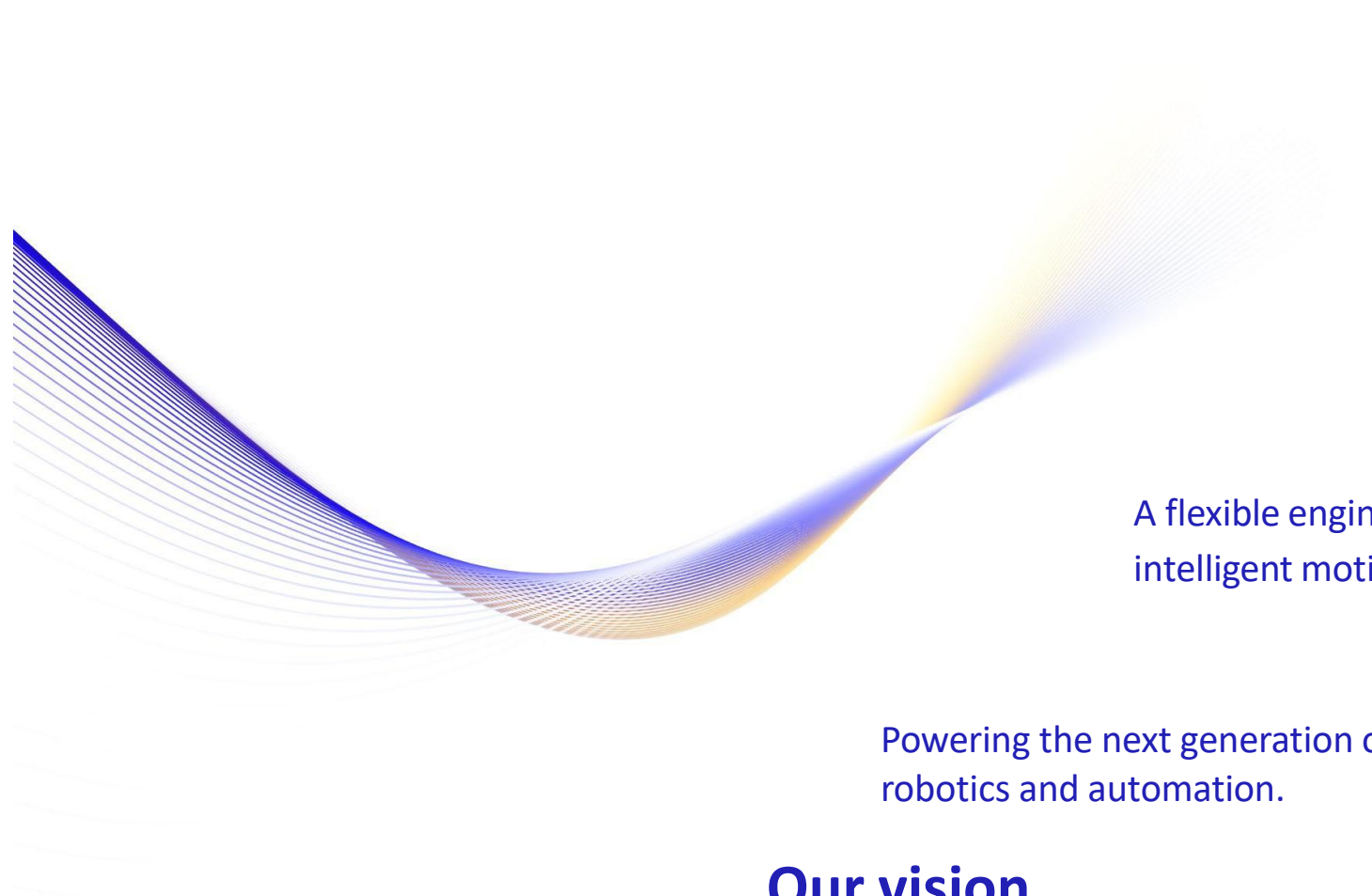




Delta Line

Moving together

Your global sub-3kW motion solution provider



From standard components to fully customized motion systems.

A flexible engineering partner delivering intelligent motion solutions.

Powering the next generation of machines, robotics and automation.

Our vision

Enabling innovation through integrated motion technologies and drive systems

Our mission

- 1.** Attention of a family company with functional capabilities of a large one
- 2.** Supply & Quality you can trust
- 3.** Flexible and Cost-effective solutions through collaborative engineering and efficient customizations
- 4.** One-stop motion supplier: wide technology portfolio and manufacturing control

Your benefits



Delta Line North America



Delta Line China



3 employees
1,7M Euro turnover
Foundation in Italy

Expansion in Europe

510 group employees
60M Euro group turnover
Co-owner of Fulling Motor China

Creation of Delta Line Electronics & Drives

650 group employees
100M Euro group turnover
Expansion in USA

1'230 group employees
130M Euro group turnover
Co-owner Control Electronics Facility

1983

2003

2010

2019

2020

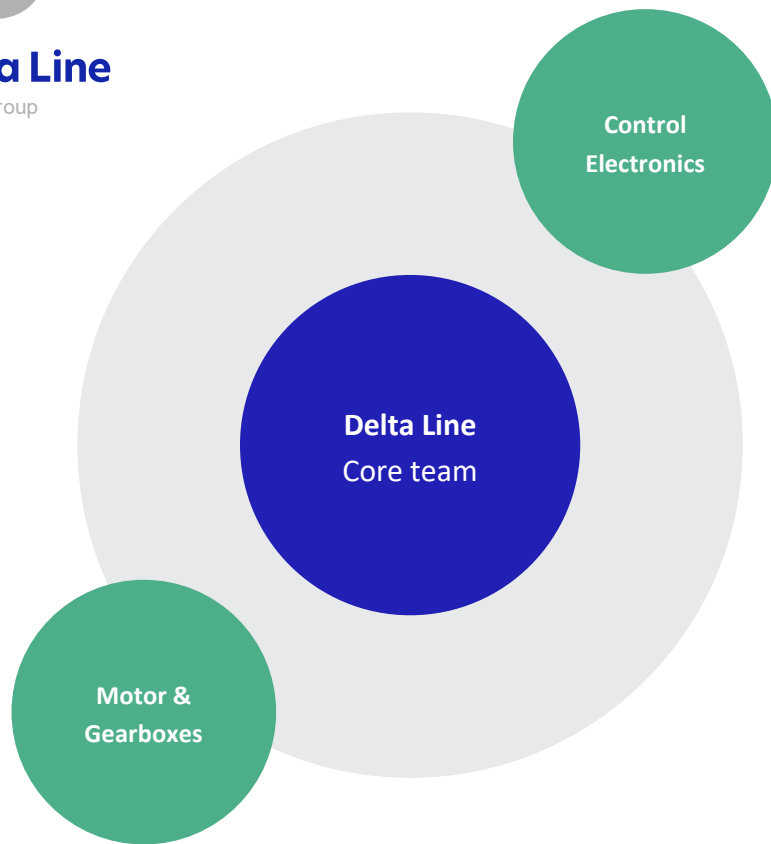
2025

★ HQ
● Subsidiaries

Manufacturing
● Owned/Co-owned

● Commercial & Technical team

Delta Line yesterday and today



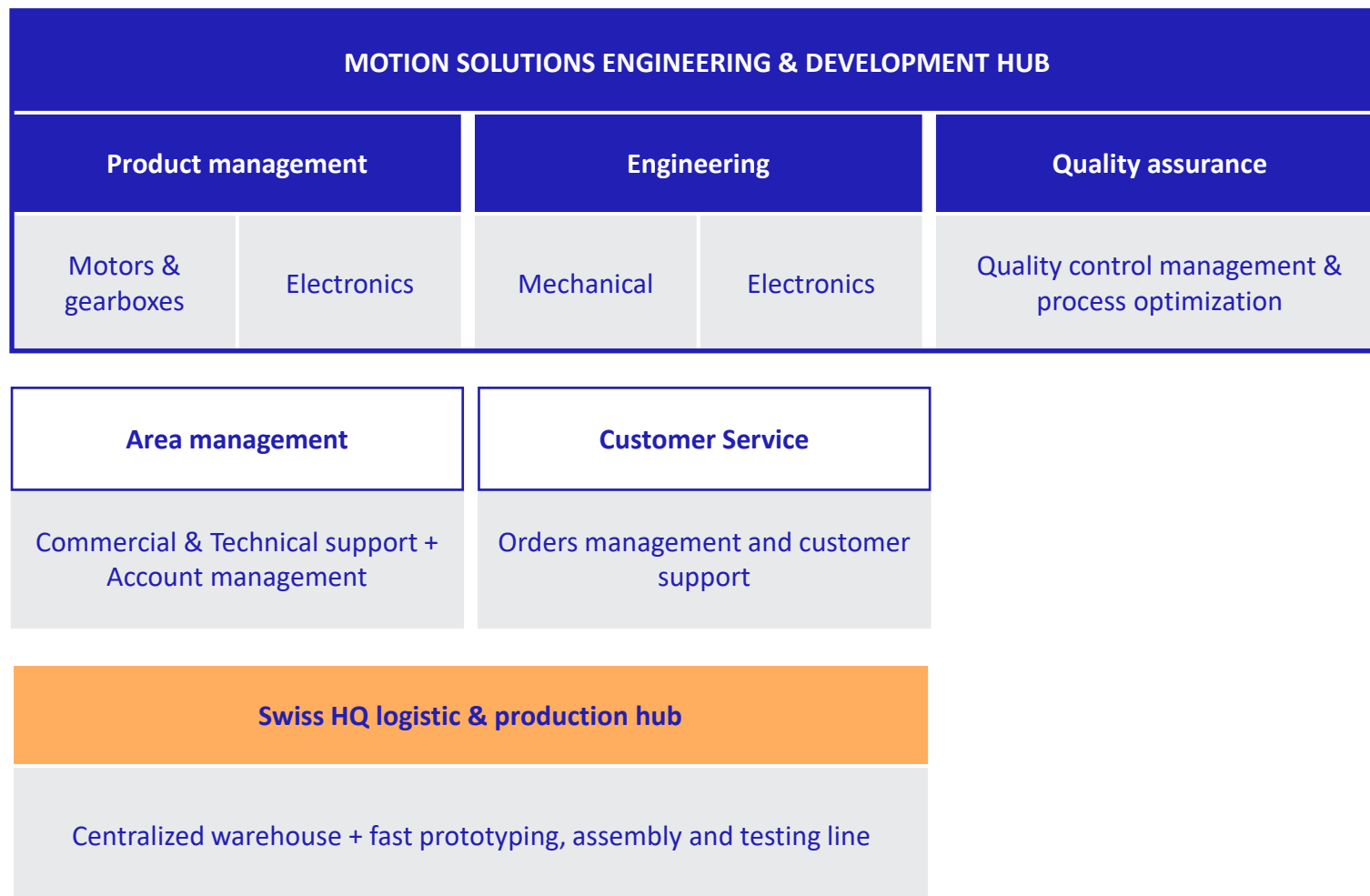
- _ Agility and flexibility of a small company
- _ Comprehensive portfolio of technologies
- _ Attractive quality/price ratio
- _ Manufacturing flexibility and control

a lean cross-functional central team, which leads all projects

- **Core team**
- **Co-owned manufacturing**

A unique structure with many advantages

Manufacturing



Delta Line Core team set up for collaborative engineering



Delta Line HQ

Location: Lamone, Switzerland

- _ 45+ employees
- _ Integrated motors
- _ Customized motion systems
- _ 100k+ assembly per year
- _ ISO 9001 & 14001, CE/UKCA certified, RoHS & REACH compliant, UL & STO on specific models

Prototyping & assembly line

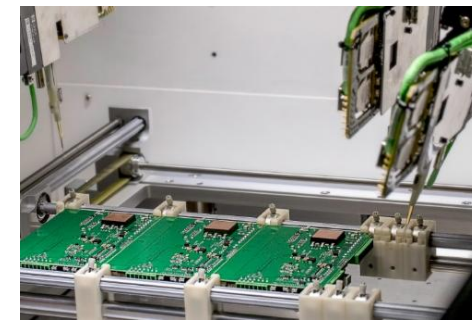


Fulling Motor

Location: Changzhou, China

- _ 74'000 sqm
- _ 1'100+ employees
- _ 6M+ yearly motors (BLDC, Stepper, Servo, Linear Actuators) & gearboxes
- _ ISO 9001 & 14001, IATF 16949, CE/UKCA certified, RoHS & REACH compliant

Motors and Gearboxes



Control Electronics Facility

Location: EU

- _ 80+ employees
- _ Controllers/Drives
- _ ISO 9001, CE/UKCA certified, RoHS & REACH compliant, UL & STO on specific models

Electronics

Our manufacturing facilities



- _ Coreless
- _ PMDC

Brushed DC Motors
Ø 8-63mm



- _ Slotted & Slotless
- _ Flat
- _ with encoder

Brushless DC Motors
Ø 10-115mm



- _ Frameless

Brushless DC Frameless Motors
Ø 25-115mm



- _ Medium voltage 220VAC
- _ Low voltage 48VDC

Servomotors
□ 38-130mm



- _ Base
- _ Advanced

Dynamic Robotic Joints
Ø 46-120mm



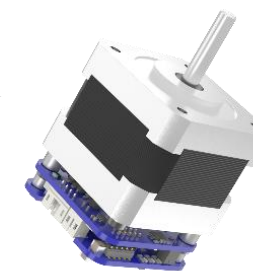
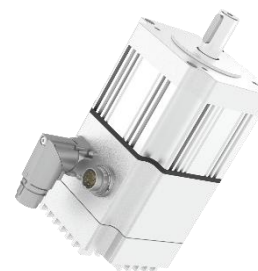
- _ Hybrid
- _ Flat
- _ Hollow shaft
- _ with encoder

Stepper Motors
Nema 6-42 Ø 14-110mm



- _ External
- _ Captive
- _ Non-Captive

Linear Actuators
Nema 8-23



- _ Speed Controller
- _ Motion Controller

BLDC, Stepper & Servo with Controller
Ø 16-80mm / □ 42-86mm

Motors / Integrated Motors

Our products



- _ for Stepper motors
- _ for Brushless motors

Controllers / Drives
Phase current 2 to 40A rms

Electronics



- _ Standard variations
- _ Modular assembly
- _ Full custom

Customizations

Custom



- _ Planetary
- _ Spur

Gearboxes
Ø 8-80mm

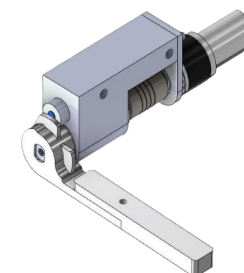
Gearboxes



_ Worm & Wheel



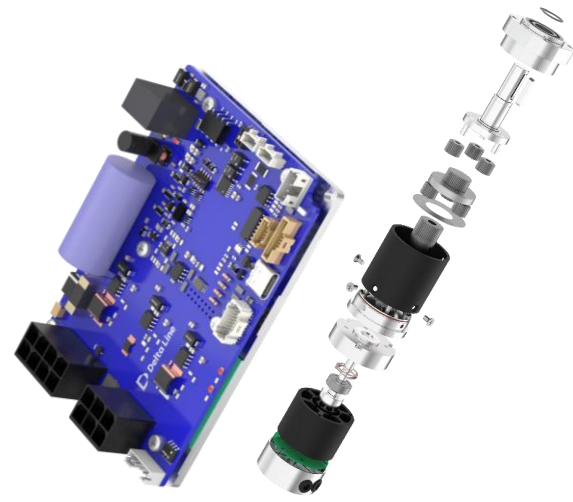
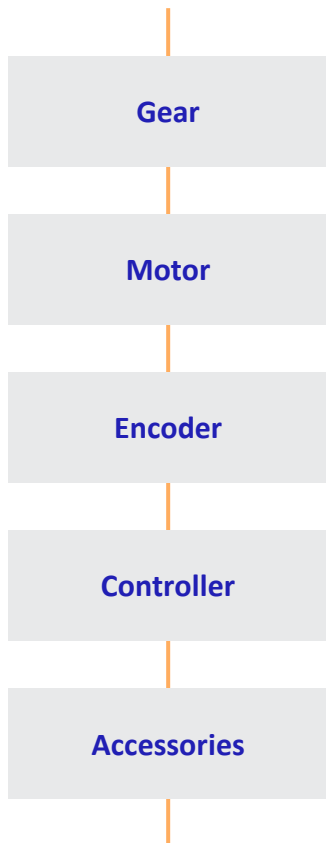
Wheel Hub



Finger Systems

Application Solutions

Our products



Fully customized motion system solutions, adapted to specific project needs and using bespoke components

Variation

Modular

Custom

Experienced in-house engineering team / Attractive MOQ / Fast development / Wide technologies portfolio

Customization capabilities

Centralized global warehouse in Switzerland next to our assembly line, safety stock, special commitment on long lead time components, easy import of products (no advance of VAT), worldwide shipments, drop-ship capabilities



Supply Chain

Our company processes are certified ISO9001 & 14001, and all our products undergo very high-quality standards and are CE/UKCA Certified and RoHS & REACH compliant

Product & Process

Quality & Supply you can trust

1'230 employees

130M Euro turnover

6M+ motors , gearboxes, drives

25+ countries

- _ Agriculture
- _ Healthcare
- _ Industrial & Pumps
- _ Intralogistics & Warehousing
- _ Labelling & Packaging
- _ Mobility
- _ Power tools
- _ Robotics
- _ Security & Access
- _ Textile

Markets & Applications



Delta Line



FULLING MOTOR
a Delta Line company

Group

Delta Line Overview

We'll get it moving!

Tell us about your project



Delta Line

Delta Line SA
Via Prè d'là, 1
CH-6814 Lamone
Switzerland

+41 (0)91 612 85 00
info@delta-line.com
www.delta-line.com

Headquarters

Delta Line North America, Inc 4600
South Syracuse, 9th Floor Denver,
CO 80237, USA

+1 303 256 6212

infous@delta-line.com

North America

Changzhou Delta Line Trade
Company Limited, 414
Building 1,
FuChen HuaYuan
New North District Changzhou,
Jiangsu, China

info@delta-line.com

Asia